

TOOLS:

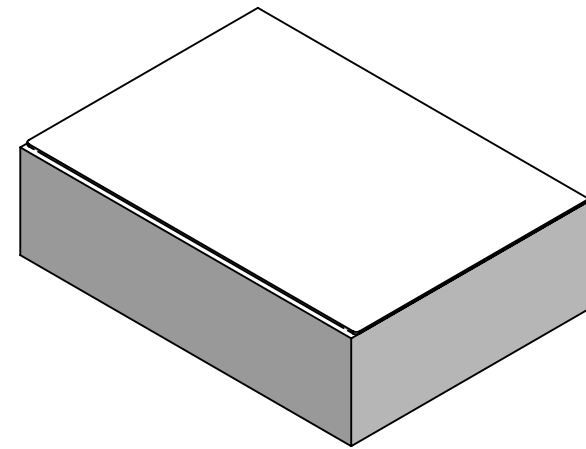
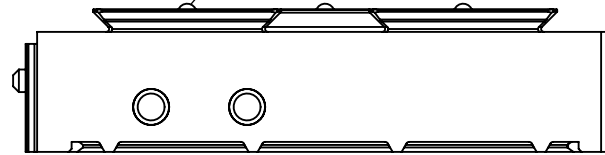
- *FLAT HEAD SCREW DRIVER
- *DRILL WITH FLAT HEAD BIT
- *OD JAW TOP JAWS/TOP PLATES
- *SPRING TOOL (REMOVAL TOOL FOR PUSH-IN RIVETS MCMaster-CARR 97576A500)

PACKAGING:

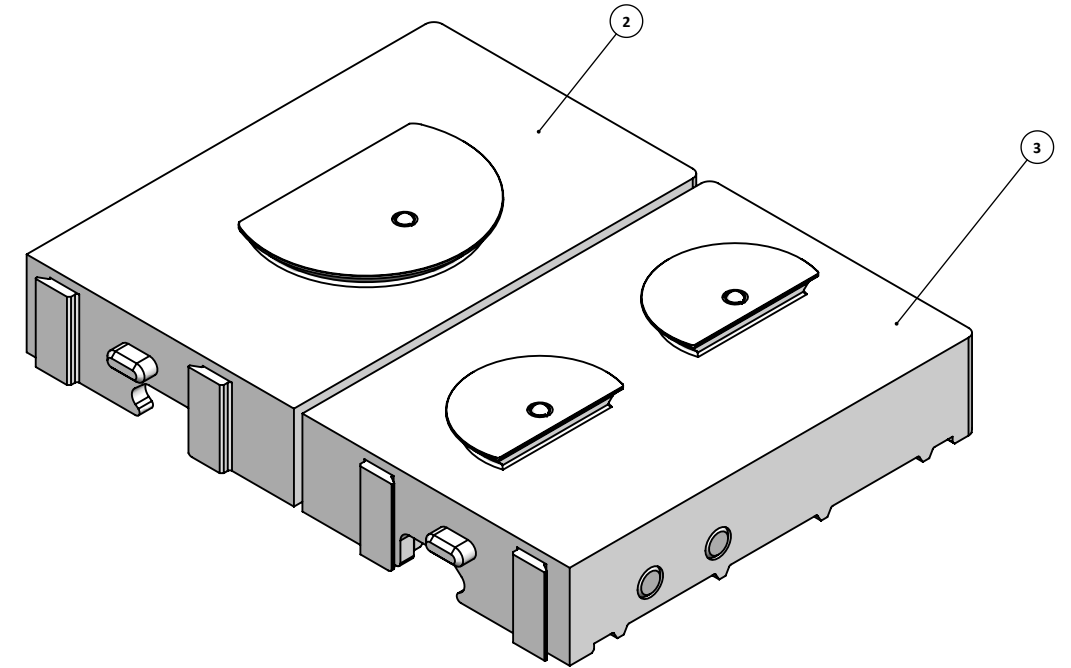
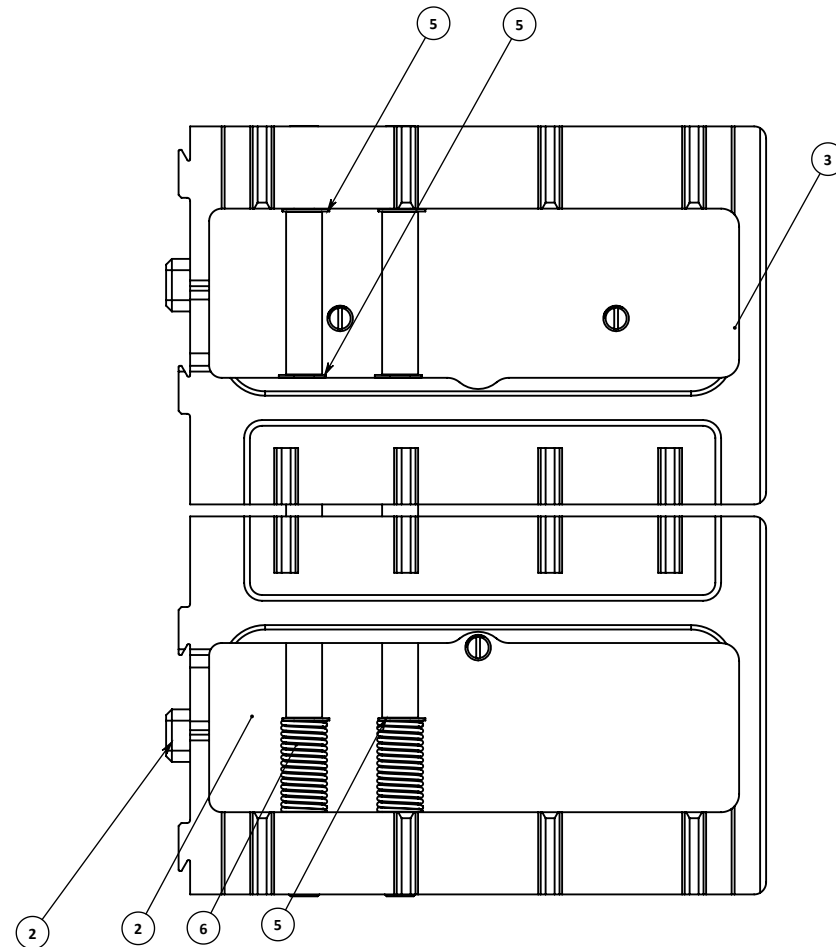
- *WRAP ASSEMBLY IN PROTECTIVE MATERIAL
- *BOX AND LABEL

KEY NO.	QTY.	PART NO.	DESCRIPTION	OEM	OEMNumber	REMARKS
1	2	5000805	CROSS-PIN, SOFTJAWS [OD]	VERSABUILT		FABRICATED
2	1	5010214	MULTIGRIP JAW, LEFT SWIVEL, OD (45-DEG)	VERSABUILT		FABRICATED
3	1	5010215	MULTIGRIP JAW, RIGHT, OD, FIXED BASE (45-DEG)	VERSABUILT		FABRICATED
4	3	5002080	BALL PLUNGER; M8 THREAD (9-13.4 LBS)	McMASTER-CARR	85015A53	PURCHASE
5	6	5000803	RETAINING RING, EXTERNAL 1/4" DIA.	McMASTER-CARR	97431A300	PURCHASED
6	2	5005794	SPRING, 0.48" OD X 0.39" ID X 3.0"L	McMaster-Carr	9657K428	PURCHASED
7	1	5006787	WHITE LITERATURE MAILER, 9 x 6.5 x 2.75	Uline	S-159	PURCHASED

INSERTING BALL PLUNGERS WITH FLAT HEAD SCREW DRIVER AND TOP JAWS/TOP PLATES, SCREW-IN UNTIL THEY BOTTOM OUT, THEN BACK OFF 1/4 TURN




USE THIS TOOL TO COMPRESS THE SPRING TO LOAD RETAINING CLIPS



REV.	DCO #	DESCRIPTION	DATE	BY/CHK./APP.
A01		REVISED BOSS FOR GRIPPER INTERFACE FROM 0.253 TO 0.235"	02/05/2024	BB
A		INITIAL RELEASE	11/03/2021	BB
01		INITIAL RELEASE	11/03/2021	BB

REMARKS	ASSEMBLY
UNITS PRIM./[SEC.]	IN./[mm]
EQUIPMENT NO.	
PART FINISH/COLOR	BY PART
PART/ASSY WEIGHT	4.32 lbs.
THIRD ANGLE PROJECTION	
INTERPRET GEOMETRIC TOLERANCING PER ASME Y14.5-2009 TOLERANCES UNLESS OTHERWISE SPECIFIED FRACTIONS ± 1/32 in DECIMALS imperial metric X.X ±.030 in ±.75 mm X.XX ±.010 in ±.25 mm X.XXX ±.005 in ±.125 mm ANGLES ±.5° ROUGHNESS 125 µin 3.2 µm BREAK ALL SHARP EDGES DIMENSIONS UNLESS OTHERWISE SPECIFIED ARE IN INCHES, [] ARE IN MM DIMENSIONS (X) ARE REFERENCE DO NOT SCALE THIS DRAWING	
DESIGNED BY	
DRAWN BY	
CHECKED BY	
APPROVED	



**12000 W FRANKLIN RD
BOISE, ID 83709**

CONFIDENTIAL

THESE DESIGNS AND DRAWINGS, INCLUDING ALL INFORMATION CONTAINED HEREIN, ARE THE EXCLUSIVE PROPERTY OF VERSABUILT
NO COPY OR REPRODUCTION MAY BE MADE WITHOUT WRITTEN APPROVAL.

MULTIGRIP

MULTIGRIP BASE JAWS, OD, 45-DEG

SIZE	SCALE	DRAWING NO.	SHEET NO.	OF	REV.
B	1:2	5010220	1	1	A01

PART NO. 5010220 USED ON: